



# **CMX-MicroNet™**

*Embedded Internet Demonstration  
for the*

*Technological Arts Adapt9S12E128  
Board with LAN Interface Card and  
Multi-function Demo Card*



# CMX-MicroNet™

## Getting Started - *IP Address*

**The IP address of the Adapt9S12E128 board is set to:**

**`http://216.233.5.50`**

**The IP address of your PC should be temporarily set to:**

**`216.233.5.32`**



# CMX-MicroNet™

## Getting Started - *IP Address*

To temporarily change your PC's IP address, go to *My Computer, Control Panel, Network, TCP/IP* and select the *IP Address* tab.

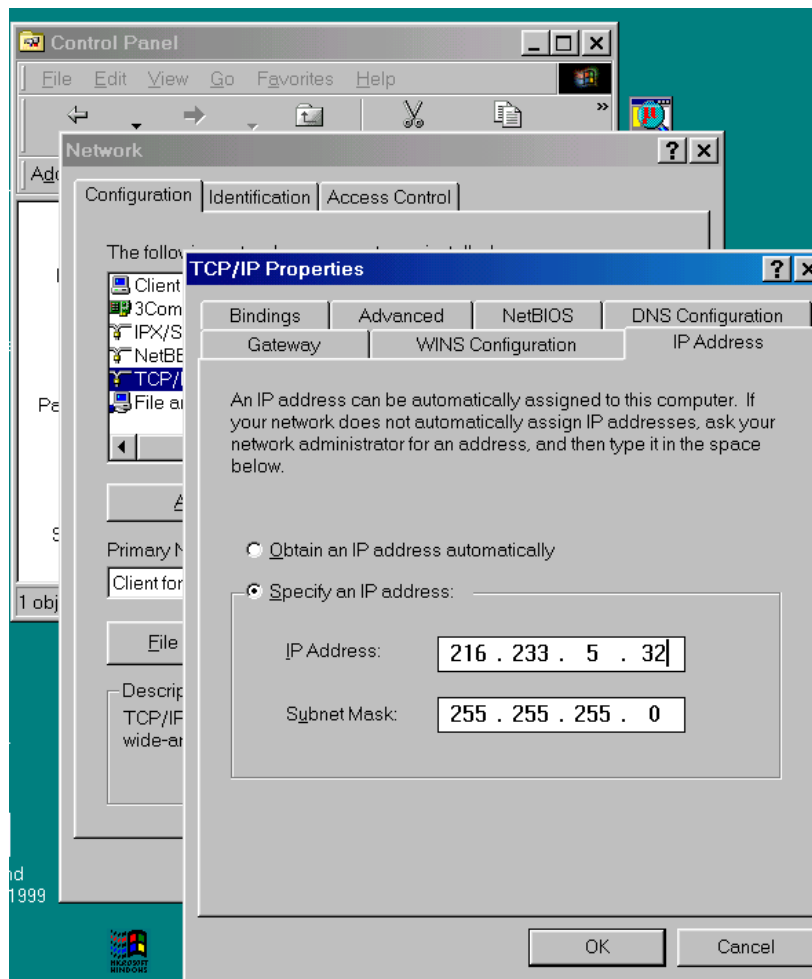
Then select the *Specify an IP Address* radio button, write down your current values so that they can be restored later, and then enter 216.233.5.32 for the *IP Address* and 255.255.255.0 for the *Subnet Mask*.

You will have to re-start the PC after changing the TCP/IP settings.



# CMX-MicroNet™

## Getting Started - *IP Address*



**These are the  
dialog boxes  
that you  
should see on  
your PC as  
you change its  
IP Address.**



# CMX-MicroNet™

## Getting Started - *Hardware*

- **The Adapt9S12E128 board can be directly connected to a PC using an Ethernet crossover cable or both the PC and the target hardware can be connected to a Hub using standard Ethernet cables.**
- **Set up the board per the Technological Arts *Using Your Adapt9S12E128 Microcontroller Module* Guide.**



# CMX-MicroNet™

## Getting Started - *Software*

- **These instructions are for using the demo with the Technological Arts uBug12 program.**
- **Connect a serial cable from the PC to the board.**
- **Set the RUN/LOAD switch on the board to LOAD.**
- **Run uBug12.exe.**
- **In the command box enter *con 1* if the serial cable is connected to COM1 on the PC or enter *con 2* if the serial cable is connected to COM2.**



# CMX-MicroNet™

## Getting Started - *Software* (cont.)

- In the command box enter *fbulk*.
- Next click *Load SRecord* in the *File* menu, click *S19/Banked*, then select the .sx file to be downloaded and click the *Open* button.
- After the download is complete enter *reset* in the command box and then enter *go*.



# CMX-MicroNet™

## Getting Started - *Browser*

**Now Run Internet Explorer or your favorite browser and enter**

**`http://216.233.5.50`**

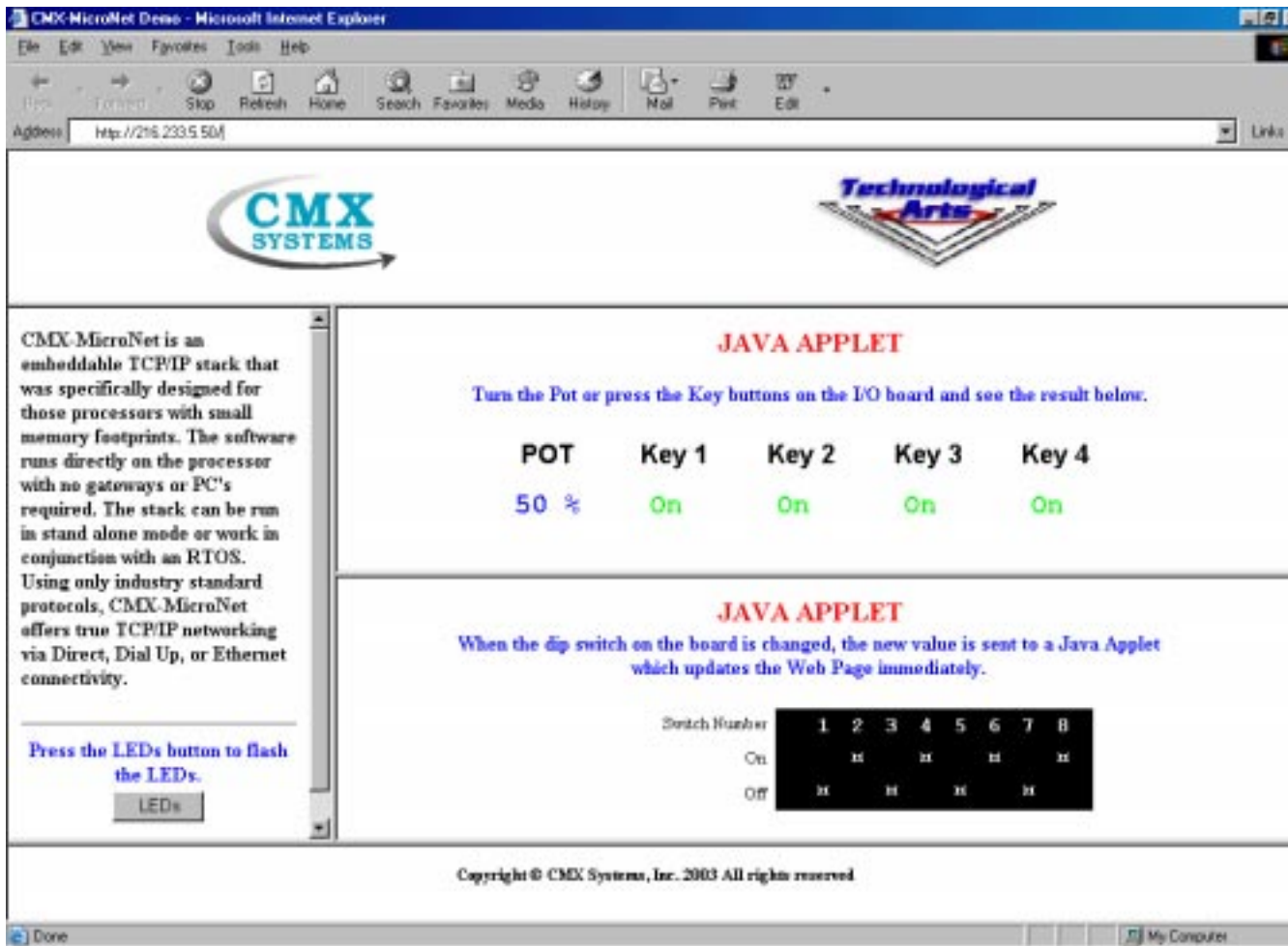
**in the location/address box.**





# CMX-MicroNet™

## Using the Demo

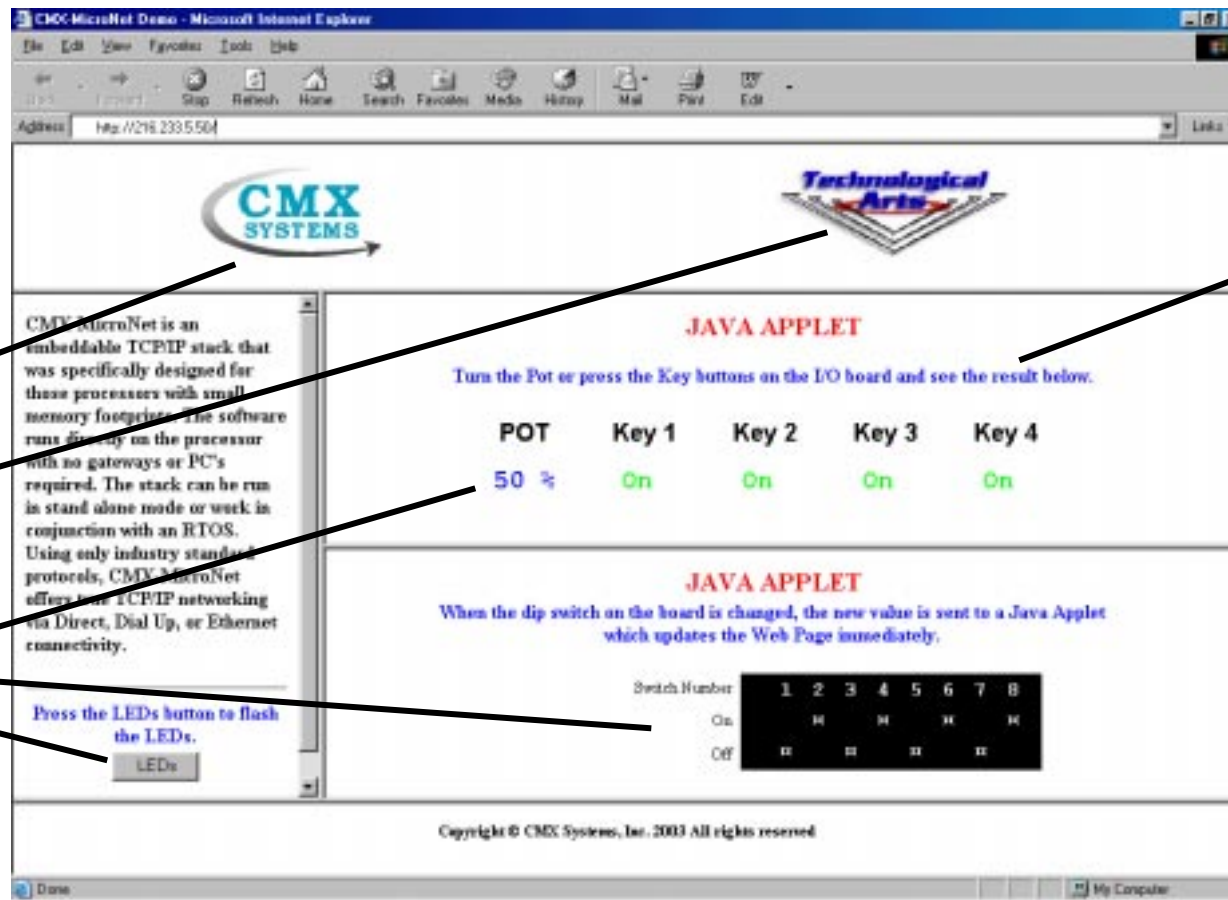


Once the web page is finished loading, this is what it should look like. Please note that the *Pot Key* and *Dip Switch* settings will vary at start up.



# CMX-MicroNet™

## Using the Demo - *Web Server!*



Graphics  
Files

Java  
Applets

Text

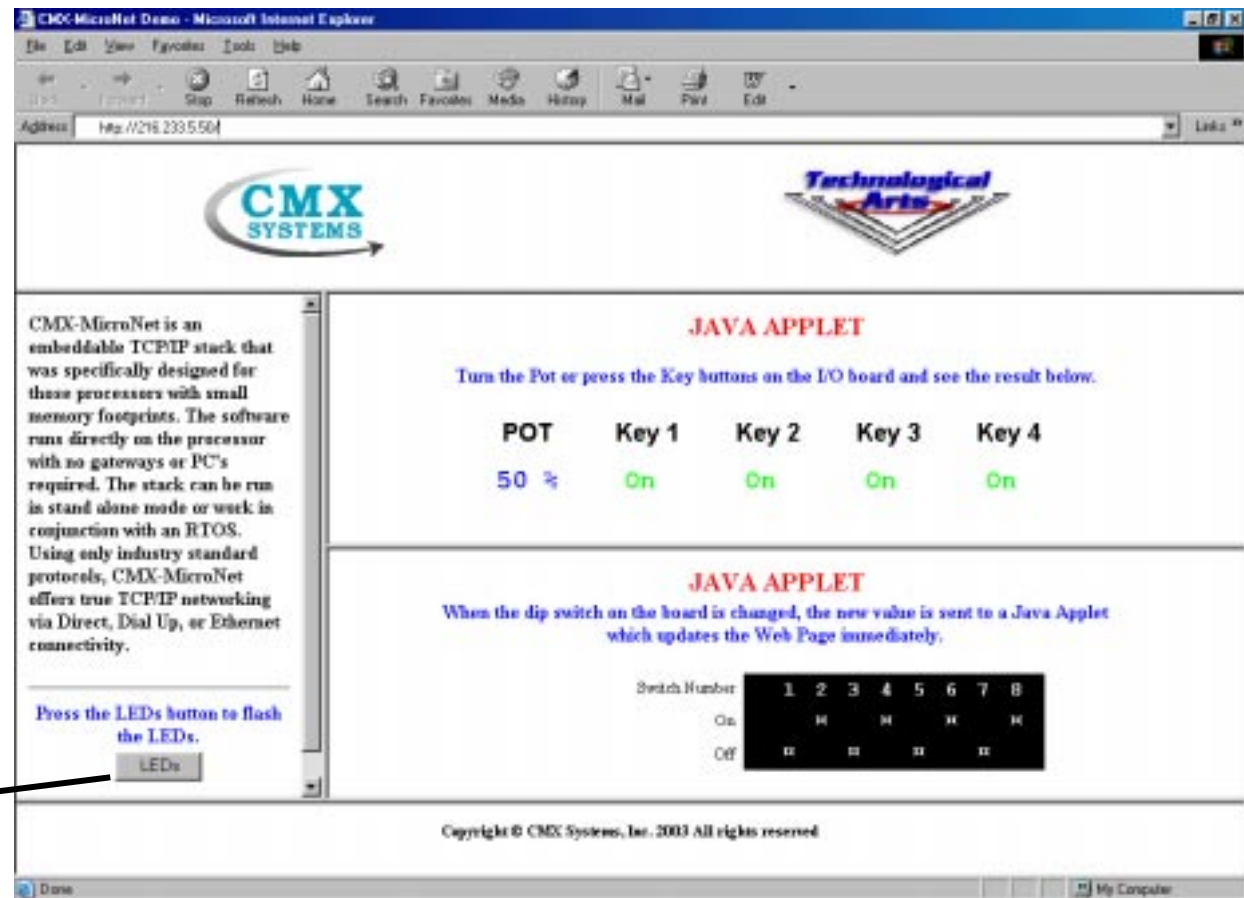


# CMX-MicroNet™

## Using the Demo - *Communication*

Press the *LEDs* Button on your browser and watch the instant response of the LEDs on the board.

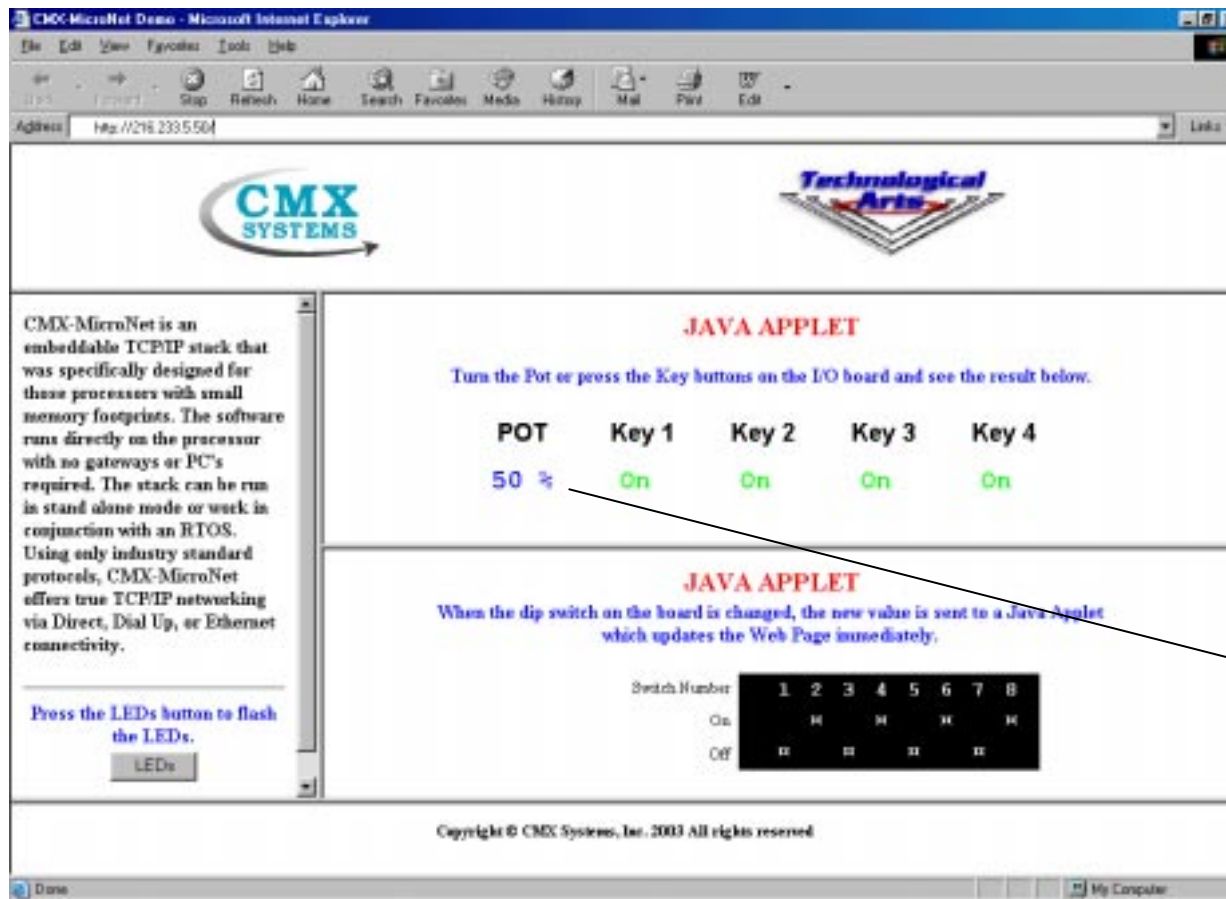
**LEDs  
Button**





# CMX-MicroNet™

## Using the Demo - *Communication*



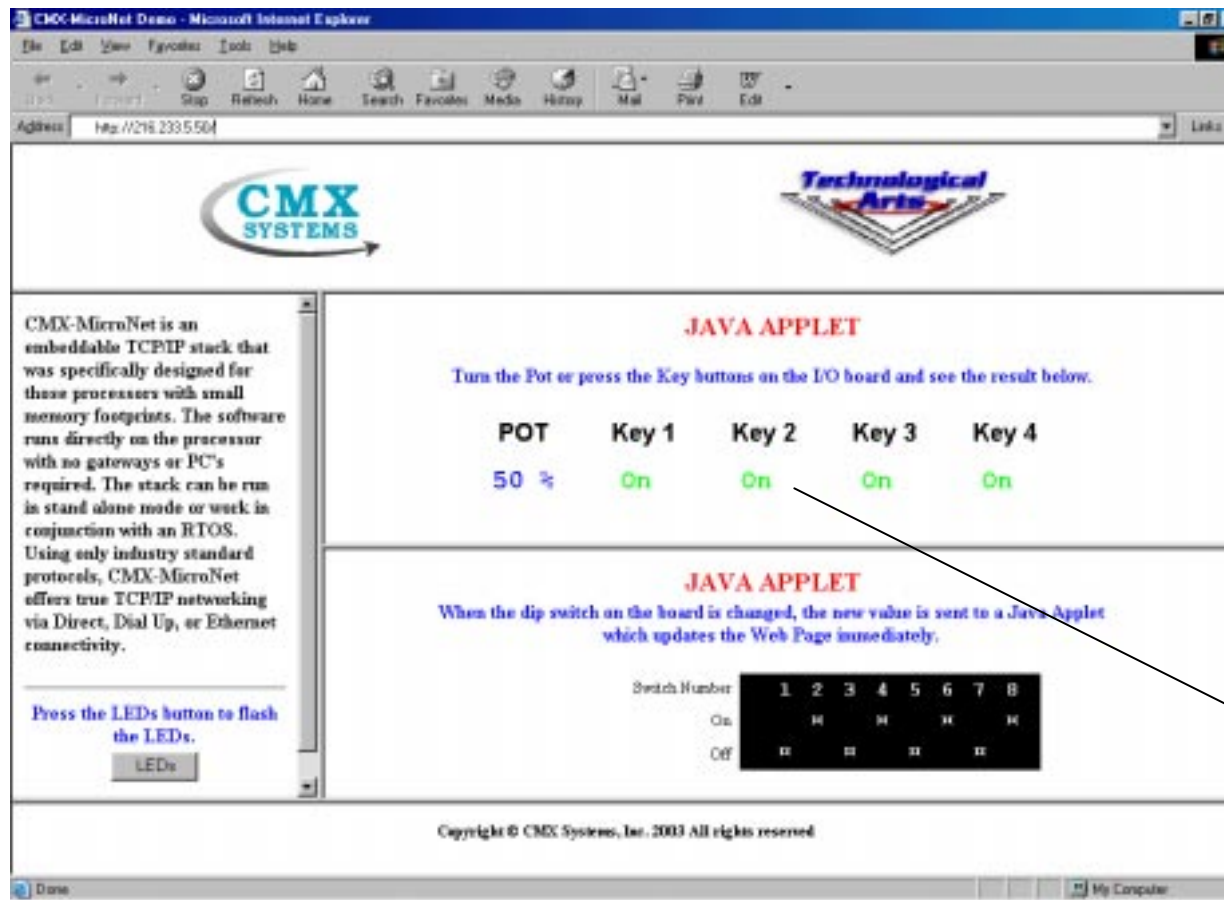
Adjust the Potentiometer on the Demo Card and watch the value change instantly on your browser.

Pot Value



# CMX-MicroNet™

## Using the Demo - *Communication*



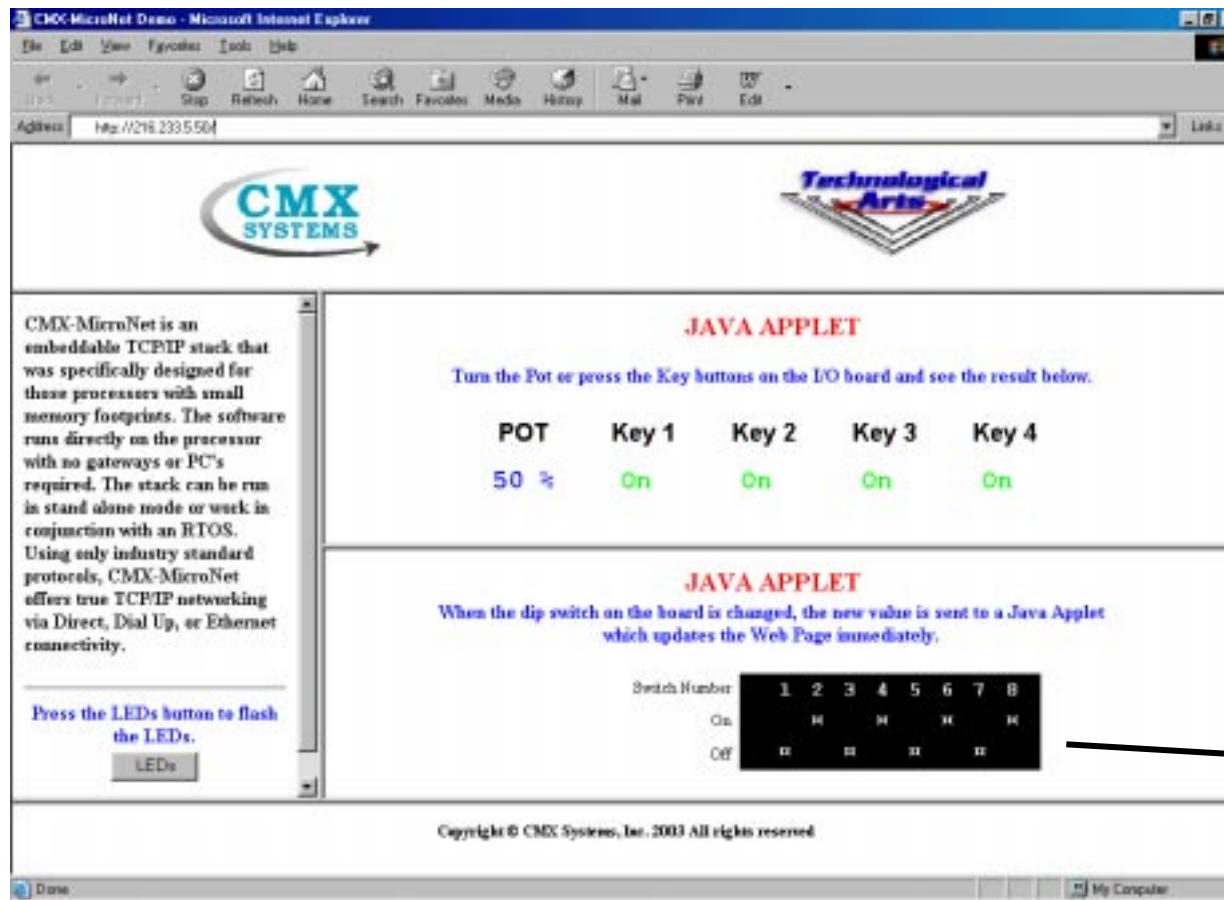
Press the any of the *Key* buttons on the Demo Card and watch the changes instantly reflected on the board.

**Key Buttons**



# CMX-MicroNet™

## Using the Demo - *Communication*



Change any of the *Dip Switches* on the Demo Card and watch the changes appear instantly on your browser.

**Dip Switches**





# **CMX-MicroNet™**

## **Ending the Demo**

- **Once you have finished running the demo, please remember to change your PC's TCP/IP settings back to their original values (see pages 2 - 4 of these instructions for details about this.)**
- **If you have any questions about running the CMX-MicroNet demo or purchasing the full software, please contact CMX Systems at:**

**CMX Systems, Inc.  
12276 San Jose Blvd.  
Suite 119  
Jacksonville, FL 32223**

**904-880-1840 (tel)  
904-880-1632 (fax)  
cmx@cmx.com**

**<http://www.cmx.com>**